

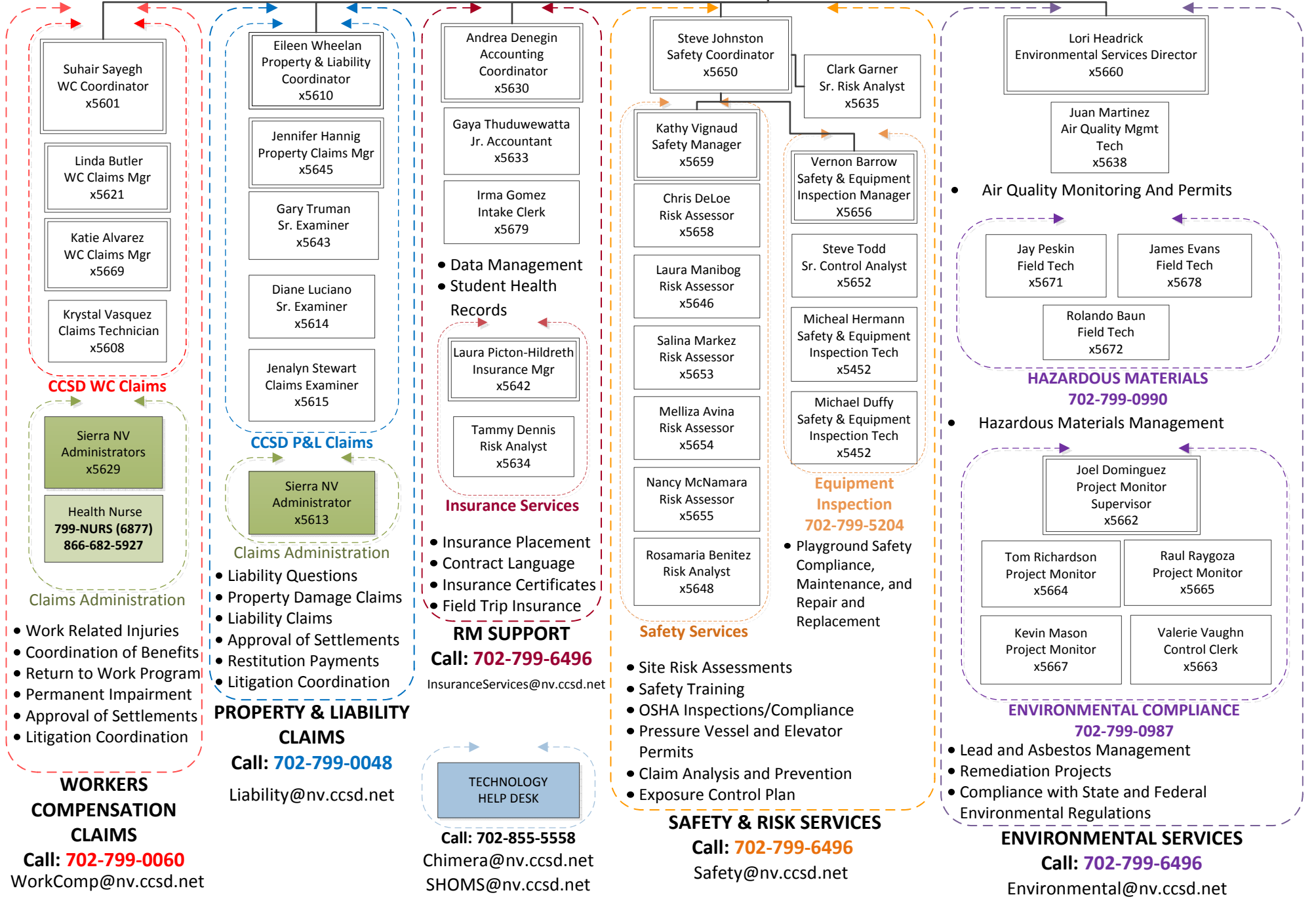
Risk and Environmental Services Department

RiskManagement@nv.ccsd.net

Kimberly Krumland
Director III
x5690

Karla Cross
Administrative Secretary
x5692

03-15-2019



CCSD WC Claims

CCSD P&L Claims

- Data Management
- Student Health Records

Insurance Services

- Insurance Placement
- Contract Language
- Insurance Certificates
- Field Trip Insurance

RM SUPPORT

Call: 702-799-6496
InsuranceServices@nv.ccsd.net

TECHNOLOGY
HELP DESK

Call: 702-855-5558
Chimera@nv.ccsd.net
SHOMS@nv.ccsd.net

Safety Services

- Site Risk Assessments
- Safety Training
- OSHA Inspections/Compliance
- Pressure Vessel and Elevator Permits
- Claim Analysis and Prevention
- Exposure Control Plan

SAFETY & RISK SERVICES

Call: 702-799-6496
Safety@nv.ccsd.net

Equipment Inspection

- Playground Safety Compliance, Maintenance, and Repair and Replacement

HAZARDOUS MATERIALS

Hazardous Materials Management

ENVIRONMENTAL COMPLIANCE

- Lead and Asbestos Management
- Remediation Projects
- Compliance with State and Federal Environmental Regulations

ENVIRONMENTAL SERVICES

Call: 702-799-6496
Environmental@nv.ccsd.net

Claims Administration

- Work Related Injuries
- Coordination of Benefits
- Return to Work Program
- Permanent Impairment
- Approval of Settlements
- Litigation Coordination

WORKERS COMPENSATION CLAIMS

Call: 702-799-0060
WorkComp@nv.ccsd.net

PROPERTY & LIABILITY CLAIMS

Call: 702-799-0048
Liability@nv.ccsd.net

- ### Claims Administration
- Liability Questions
 - Property Damage Claims
 - Liability Claims
 - Approval of Settlements
 - Restitution Payments
 - Litigation Coordination